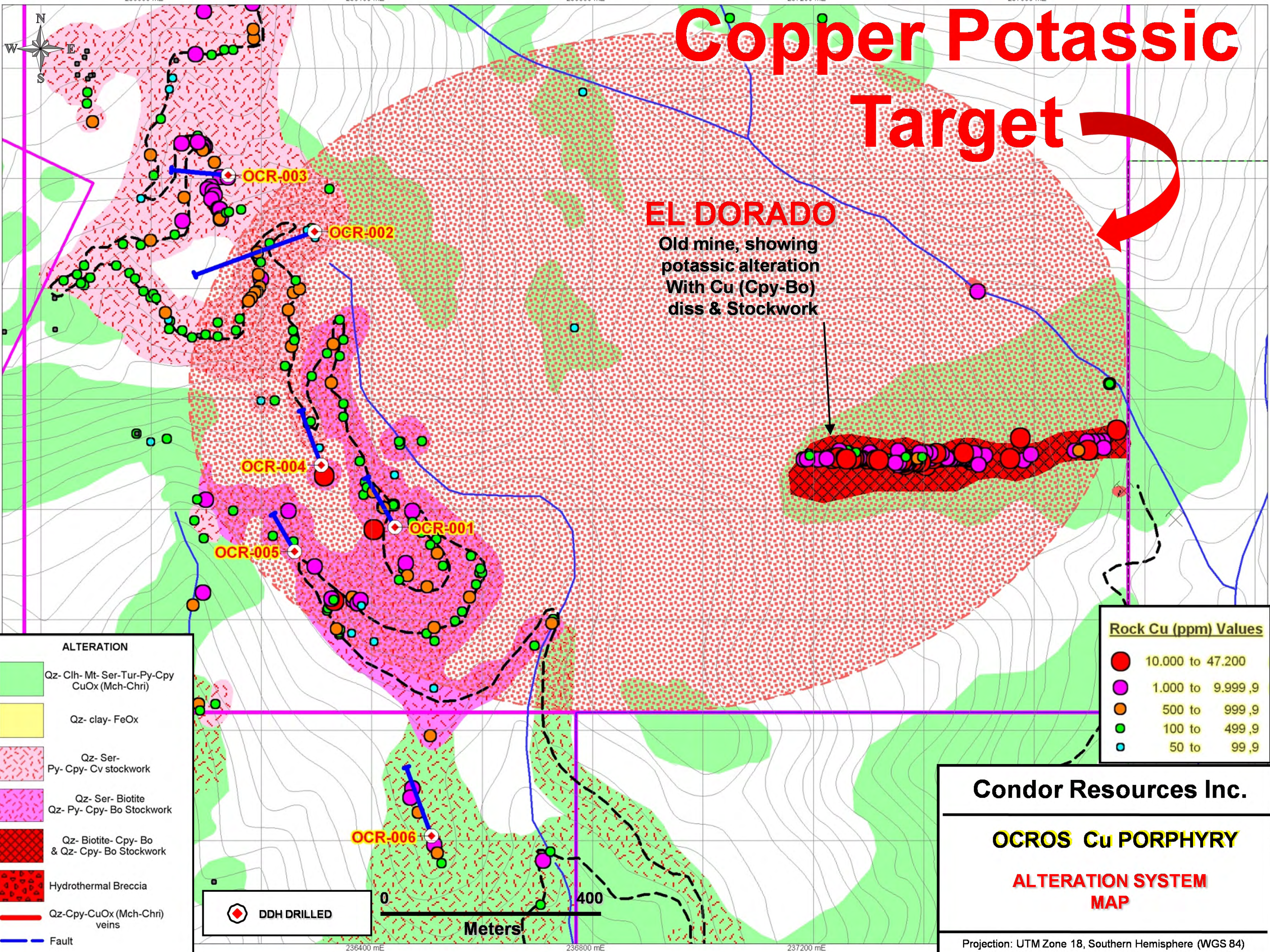


# Copper Potassic Target



## EL DORADO

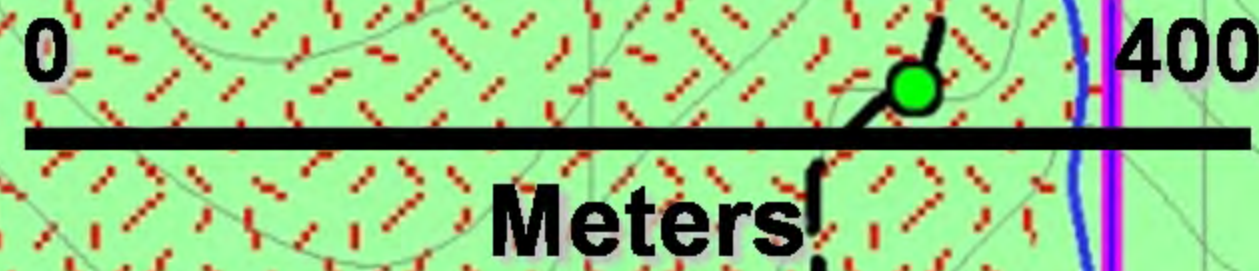
Old mine, showing potassic alteration With Cu (Cpy-Bo) diss & Stockwork



**ALTERATION**

- Qz- Clh- Mt- Ser- Tur- Py- Cpy CuOx (Mch- Chri)
- Qz- clay- FeOx
- Qz- Ser- Py- Cpy- Cv stockwork
- Qz- Ser- Biotite Qz- Py- Cpy- Bo Stockwork
- Qz- Biotite- Cpy- Bo & Qz- Cpy- Bo Stockwork
- Hydrothermal Breccia
- Qz- Cpy- CuOx (Mch- Chri) veins
- Fault

◊ DDH DRILLED



**Rock Cu (ppm) Values**

- 10.000 to 47.200
- 1.000 to 9.999,9
- 500 to 999,9
- 100 to 499,9
- 50 to 99,9

**Condor Resources Inc.**

---

**OCROS Cu PORPHYRY**

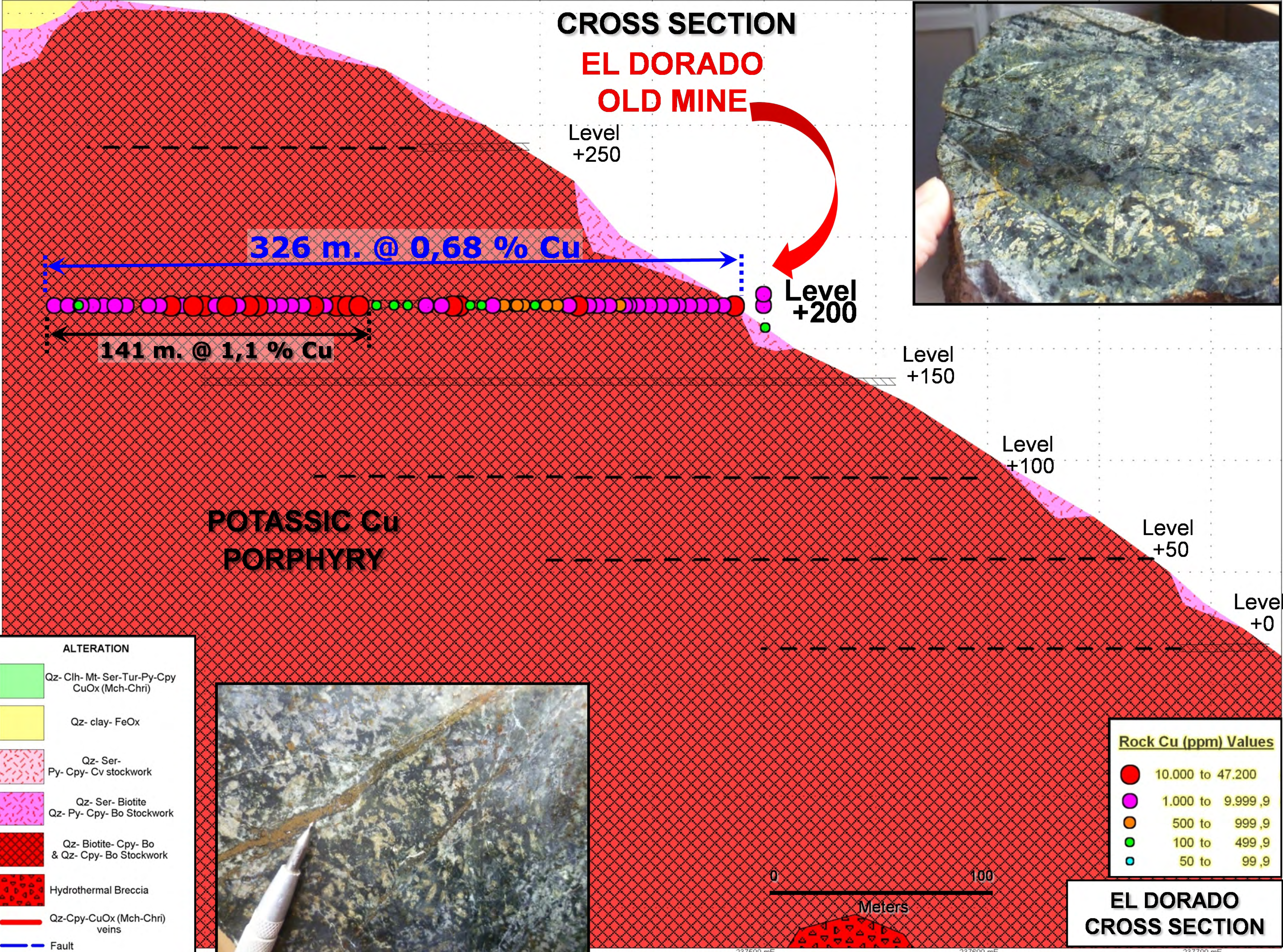
---

**ALTERATION SYSTEM MAP**

---

Projection: UTM Zone 18, Southern Hemisphere (WGS 84)

# CROSS SECTION EL DORADO OLD MINE



Level +250

326 m. @ 0,68 % Cu

141 m. @ 1,1 % Cu

Level +200

Level +150

Level +100

Level +50

Level +0

POTASSIC Cu  
PORPHYRY

**ALTERATION**

- Qz- Clh- Mt- Ser- Tur- Py- Cpy  
CuOx (Mch- Chri)
- Qz- clay- FeOx
- Qz- Ser-  
Py- Cpy- Cv stockwork
- Qz- Ser- Biotite  
Qz- Py- Cpy- Bo Stockwork
- Qz- Biotite- Cpy- Bo  
& Qz- Cpy- Bo Stockwork
- Hydrothermal Breccia
- Qz- Cpy- CuOx (Mch- Chri)  
veins
- Fault

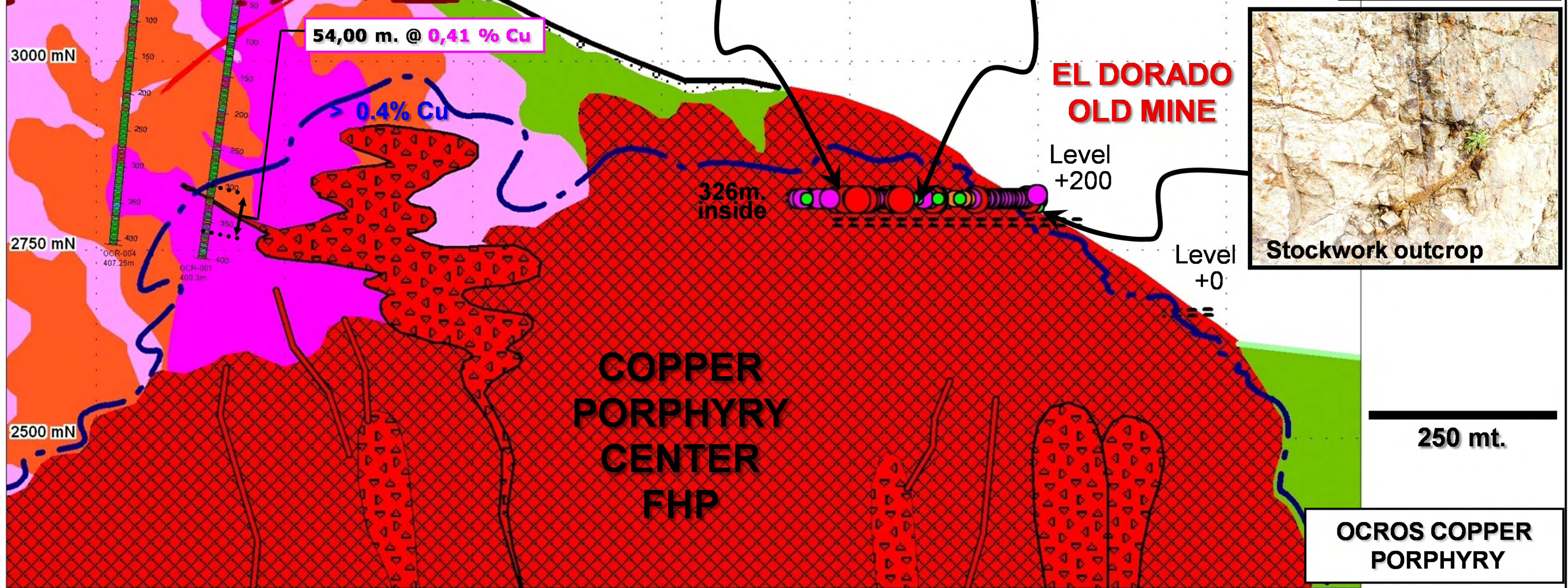
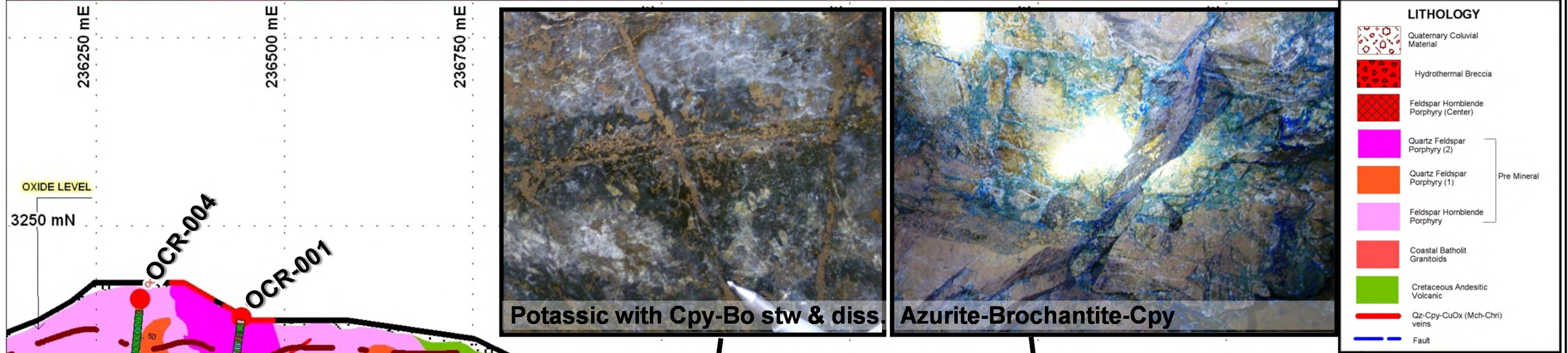
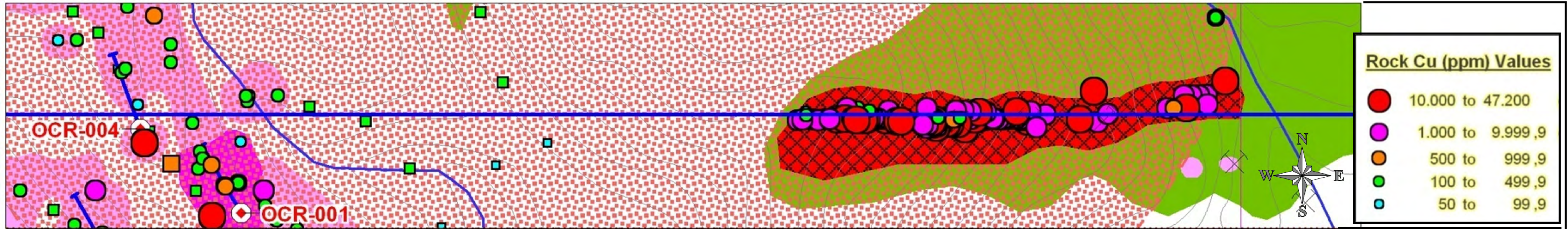


**Rock Cu (ppm) Values**

- 10.000 to 47.200
- 1.000 to 9.999,9
- 500 to 999,9
- 100 to 499,9
- 50 to 99,9



**EL DORADO  
CROSS SECTION**



**Level +200 with potassic assemblages and textures**

